

Italian Hydrographic Institute and OGS Arctic Surveying and Mapping

Roberta Ivaldi¹ Michele Rebesco²

¹ Italian Hydrographic Institute (roberta_ivaldi@marina.difesa.it);

² OGS, Sgonico, TS, Italy

Abstract

Italian Hydrographic Institute (IIM) surveyed, produced and published nautical maps in the Arctic since the first decades of the last century.

The

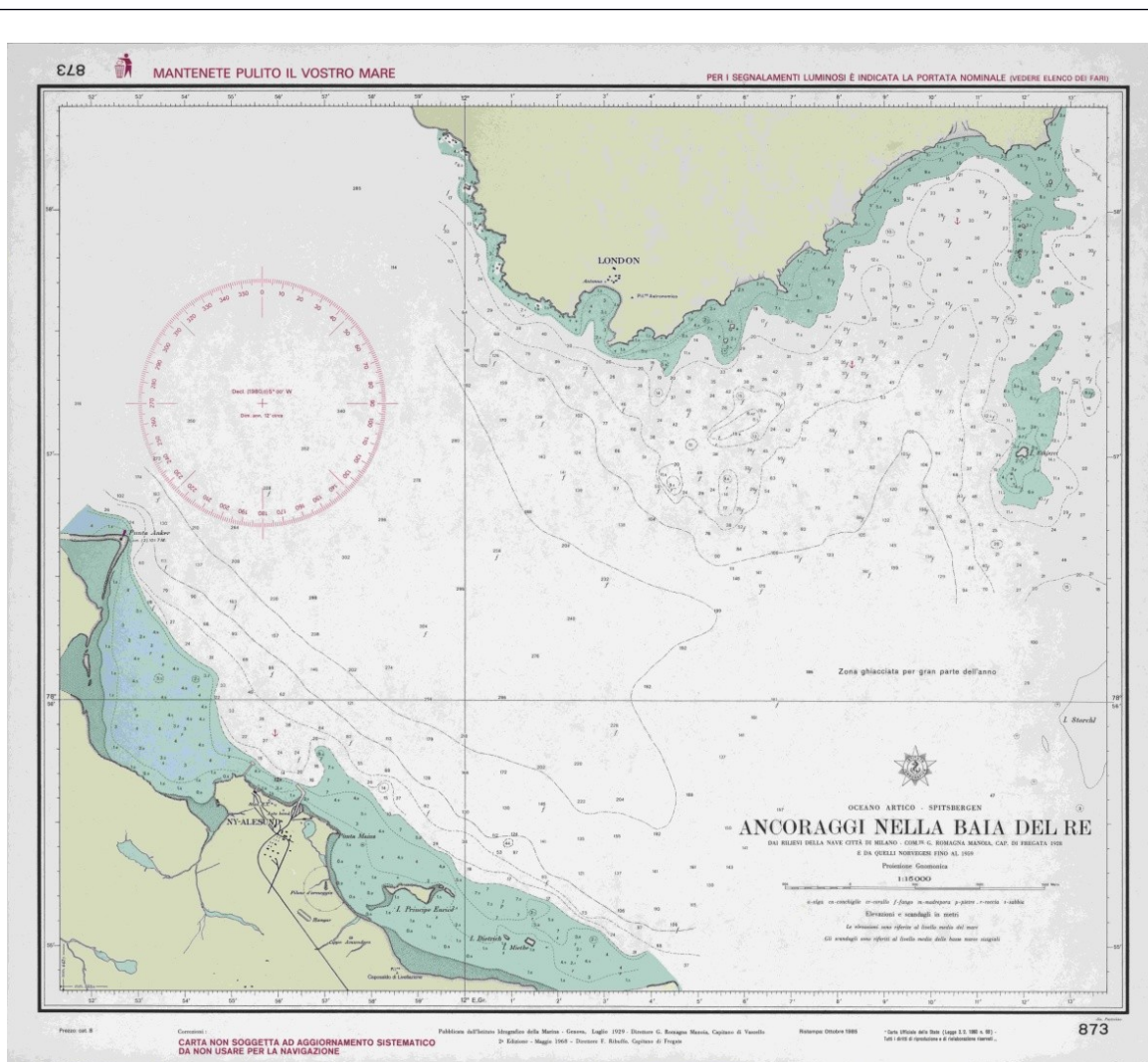


Figure 1: Example of Arctic historical nautical maps published between 1929 and 1959. Ancoraggi nella Baia del Re, 873 Nautical Chart (scale 1:15.000) edited by the Italian Hydrographic Institute.

A part from this historical activity, during recent years it is collaborating with OGS for the enhanced processing of multibeam bathymetric and acoustic backscatter data acquired on the NW margin of

the Barents Sea by OGS and other international institutes. The Institutes shared the data and will produce new thematic maps over the Arctic areas.

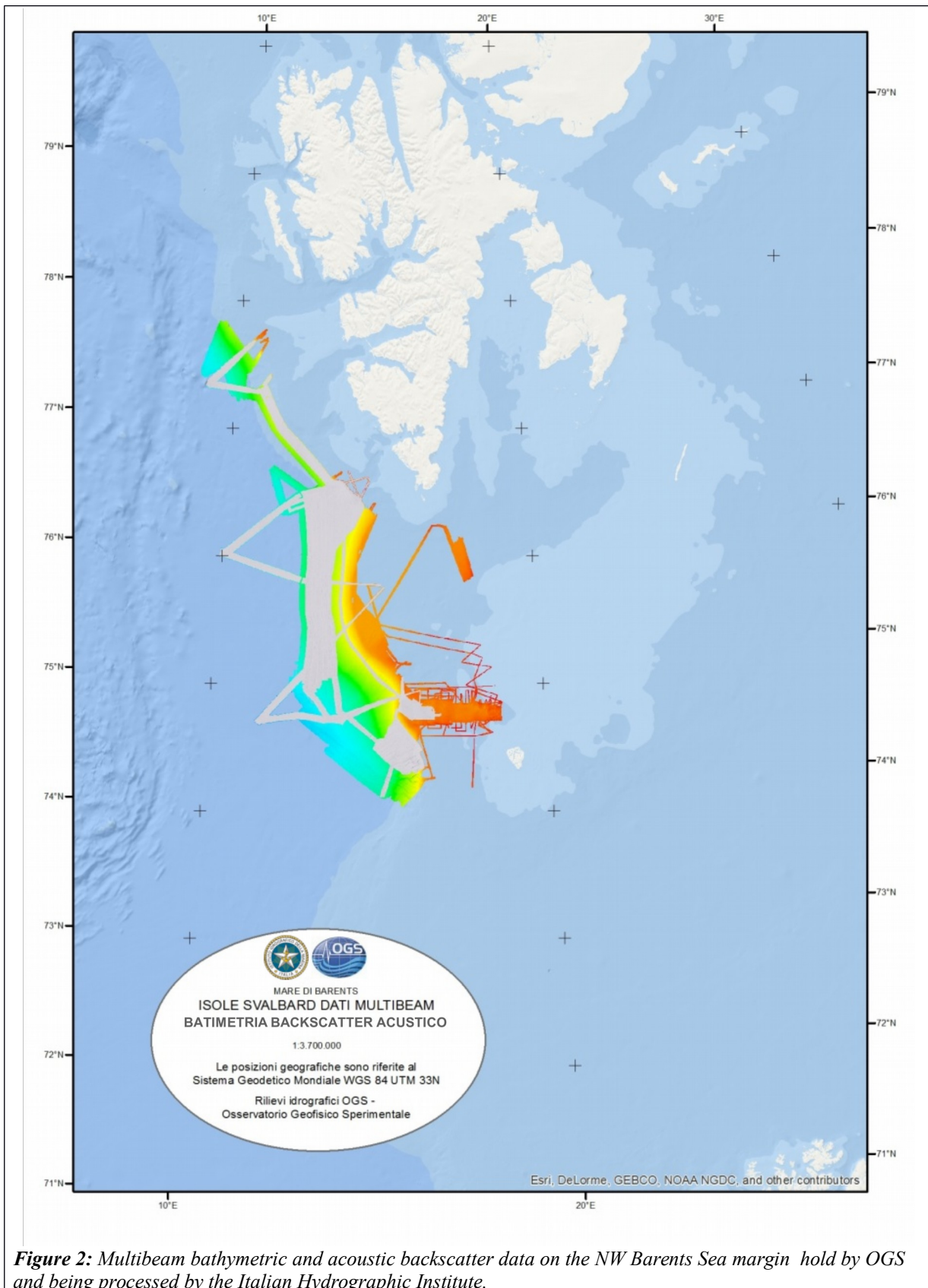


Figure 2: Multibeam bathymetric and acoustic backscatter data on the NW Barents Sea margin hold by OGS and being processed by the Italian Hydrographic Institute.

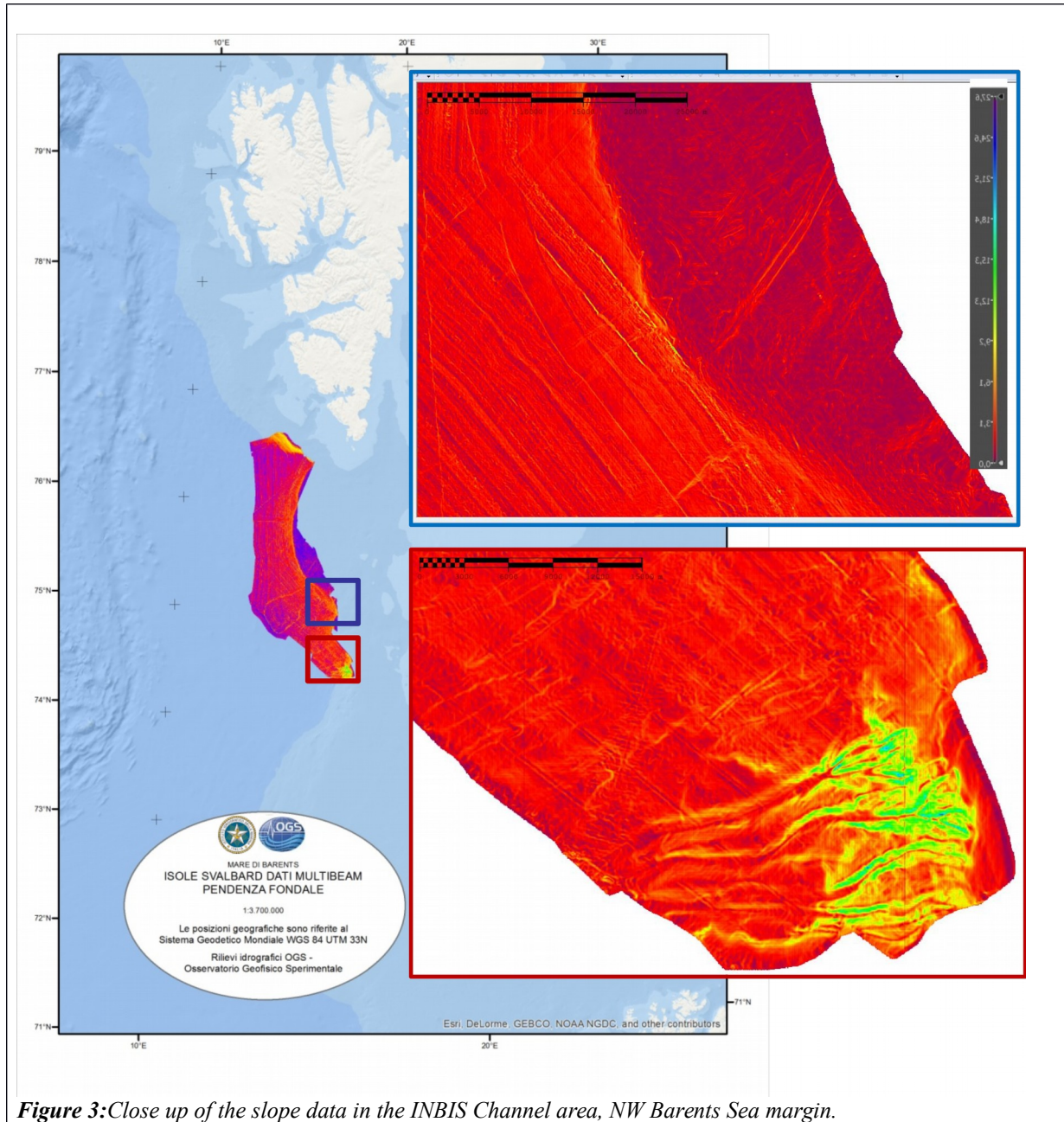


Figure 3: Close up of the slope data in the INBIS Channel area, NW Barents Sea margin.

The Italian Hydrographic Institute is also considering to participate, in collaboration with OGS and CNR, to a forthcoming research cruise to be conducted in sub-Arctic areas in the next year. New data will be made available to the scientific community and comparison with historical data will be possible.

References

- Rebesco, M., et al. 2011. Deglaciation of the Barents Sea Ice Sheet - a swath bathymetric and sub-bottom seismic study from the Kveithola Trough. *Marine Geology*, **279**, 141-14.
- Rebesco M., Urgeles R., Özmaral A., Coribar Scientific Party, in press. Grounding Zone Wedges, Kveithola Trough (NW Barents Sea). In: Dowdeswell J.A., Canals M., Jakobsson M., Todd B.J., Dowdeswell E.K., Hogan K.A. (Eds.) *Atlas of Submarine Glacial Landforms*. Geological Society of London Memoir.
- Rui, L., et al., 2016. Downslope and alongslope sedimentary processes on a high latitude continental margin: NW Barents Sea. PAST Gateways fourth international conference and workshop, Trondheim, Norway, May 23-27, 2016.